



SAILING INSTRUCTIONS

Regatta Copa Mexico

EDICION OLIMPICA

**March 2 – 9, 2012
Marina Riviera Nayarit
Nuevo Vallarta, Nayarit, México**

**Organizing Authority:
Copa México Team
in conjunction with the Mexican and
International J/24 Class Associations
and the
FEDERACION MEXICANA DE VELA A.C.**

1. RULES

1.1 The regatta will be governed by the rules as defined in The Racing Rules of Sailing .

1.2 No national prescriptions will apply.

1.3 The Regatta Regulations of the International J/24 Class (IJCA) will apply.

1.4 With permission of the IJCA, the following IJCA class rule is modified:

IJCA rule 5.3 is changed to permit a boat to sail with different crew on different days provided the crew changes are declared at registration. The number of crew shall remain the same throughout the regatta and the registered crew for each day shall comply with IJCA rule 5.2. Crew changes not declared at registration require advance written approval of the jury and will only be approved in exceptional circumstances.

1.5 RRS 41 will be changed as follows:

While racing, RRS 41 applies without modification. In addition, from the time a boat leaves her mooring for the first race of each day until she returns to her mooring, she shall not receive outside help from any outside source other than boats under the direction of the organizing authority or other competitors or as permitted by RRS 41. This also changes the preamble to Part 4 of the RRS.

1.6 RRS 49.2 is changed as follows:

RRS 49.2: "No member of the crew shall position any part of his/her torso outside any lifelines, other than to briefly perform a necessary task."

1.7 Bow numbers may be assigned to each boat and if assigned, will be used as the identification for the boat during the regatta. Bow numbers shall be applied in accordance with the instructions supplied with the numbers and shall remain affixed until after a boat hauls out at the end of the regatta.

1.8 Per RRS 80, advertising shall comply with International Sailing Federation (ISAF) Regulation 20, and International J/24 Class Association rule 2.6. Boats shall display advertising supplied by the organizing authority as instructed. The advertising shall remain affixed for the duration of the regatta unless otherwise specified.

1.9 Any questions regarding these sailing instructions shall be submitted in writing to the Regatta office at the Villa Copa Mexico. The questions and any answers will be posted on the regatta notice board no later than 0800 of the day following submission.

1.10 If there is a conflict between languages the English text will take precedence.

2. NOTICES TO COMPETITORS

Notices to competitors will be posted on the regatta notice board located at the Regatta Office at Villa Copa Mexico.

3. CHANGES TO SAILING INSTRUCTIONS

Any change to the Sailing Instructions will be posted before 1100 hours on the day it will take effect, except that any change in the schedule of races will be posted before 1900 hours the day before the change is to take effect except that running an extra race, or races, as per SI 5.6 will only be signaled on the water as per SI 5.8.

4. SIGNALS MADE ASHORE

4.1 Signals made ashore will be displayed at the flag pole at the Villa Copa Mexico.

4.2 When flag AP is displayed ashore, '1 minute' is replaced with 'not less than 60 minutes in the Race Signal AP.'

4.3 When flag Y is displayed ashore, RRS 40. applies at all times while afloat. This changes the preamble to Part 4.

5. SCHEDULE

5.1 Registration: March 2 and 3 from 09:00 hrs to 18:00 hrs.

5.2 Measurement and inspection: March 2, 3, 4 from 09:00 hrs to 18:00 hrs.

5.3 Schedule of racing is as follows:

Sunday March 4, 2012	11:00 hrs	Skippers Meeting
Sunday March 4, 2012	13:30 hrs	Practice race warning signal

Monday March 5, 2012	11:00 hrs	Official Opening Ceremony
Monday March 5, 2012	13:30 hrs	Warning signal first race of the day
Tuesday March 6, 2012	13:30 hrs	Warning signal first race of the day
Wednesday March 7, 2012	13:30 hrs	Warning signal first race of the day
Thursday March 8, 2010	13:30 hrs	Warning signal first race of the day
Friday March 9, 2010	13:30 hrs	Warning signal first race of the day

- 5.4 Number of races: Ten (10) races are scheduled with two (2) races planned per day.
- 5.5 No warning signal will be made after 15:30 on Friday March 9, 2010.
- 5.6 The race committee may run more than two races on any day. If the regatta is on schedule, one extra race may be sailed, so that the regatta becomes not more than one race ahead of schedule. If the regatta is behind schedule, extra races to a maximum of four races on any day may be sailed.
- 5.7 Races not completed on the scheduled day are rescheduled as the first races on the following day. Races not completed on the last day of racing will not be sailed.
- 5.8 When the race committee intends to start no more races on any day, they will display "AP" over "A" with no sound from the finishing committee boat while boats are finishing.
- 5.9 After a delay or postponement, to alert boats that a race will begin soon, the race committee will display an orange flag with a long sound accompanied by an announcement on VHF Channel 69 (this changes NOR 14.1) at least four minutes before a Warning signal.

6. REGISTRATION AND MEASUREMENT

Competitors shall comply with the Registration and Measurement requirements in the Notice of Race.

7. CLASS FLAG

The class flag will be a white flag displaying a blue J/24 logo.

8. RACING AREA

Attachment I shows the location of the racing area.

9. CHECK-IN, CHECK-OUT

- 9.1 Before the warning signal of the first race each day, each boat shall sail on starboard tack past the stern of a designated race committee boat displaying flag 'L' prior to the warning signal and hail her bow number until acknowledged by the race committee repeating the boat's number.
- 9.2 A boat that retires from a race or does not intend to compete in a race shall notify the race committee as soon as possible.

10. THE COURSES

- 10.1 The courses will be windward/leeward, with 5 legs (Course 5) or 4 legs (Course 4) as diagrammed in Attachment II.

- 10.2 An offset mark will be used in conjunction with Mark 1. The offset mark will be placed to the left of the weather mark (looking upwind) at approximately a right angle to the weather leg and approximately 6 - 10 boat lengths (50 - 80 m) to port of Mark 1.
- 10.3 Mark 2 will be a gate consisting of two marks. Boats must pass through the gate and then round Mark 2p to port or Mark 2s to starboard. In the event that a gate is not in place, boats shall round the existing "leeward" mark to port.
- 10.4 No later than the warning signal, the race committee signal boat will display the course designator, the approximate compass bearing and distance for the first leg from the starting line to mark 1.
- 10.5 Course 5 shall not be shorted to less than four legs in length and Course 4 shall not be shorted to less than three legs in length. For purposes of this SI only, the distance between mark 1 and the offset mark is not a leg of the course. This changes RRS 33.

11. MARKS

- 11.1 Mark 1 will be a yellow tetrahedron, Mark 1a will be a smaller yellow tetrahedron, Marks 2p and 2s will be yellow tetrahedrons.
- 11.2 New marks, when used in accordance with SI 13 will be orange tetrahedrons.
- 11.3 The starting marks will be race committee boats at each end of the starting line.
- 11.4 In the event that the port-end line race committee boat is not in place, it will be replaced with an orange tetrahedron.
- 11.5 The finishing marks will be a race committee boats at each end of the finishing line displaying orange flags.
- 11.6 In the event that the port-end finishing mark described as a race committee boat is not in place, it will be replaced with an orange tetrahedron.

12. AREAS THAT ARE OBSTRUCTIONS

No areas are designated as obstructions.

13. THE START

- 13.1 Races will be started in accordance with RRS 26.
- 13.2 The race committee may use VHF channel 69 to announce the intended time of warning signal and to count down the last few seconds before the Warning Signal, Preparatory Signal and/or Starting Signal. Failure to make or to receive such broadcasts shall not be grounds for redress. This changes RRS 62.1(a).
- 13.3 The starting line will be between staffs displaying orange flags on the marks described in SIs 11.3 and 11.4.
- 13.4 The starting line shall be to leeward of Marks 2p and 2s.
- 13.5 A boat that starts more than 10 minutes after her starting signal will be scored Did Not Start (DNS) without a hearing. This changes RRS 63.1 A4 and A5.
- 13.6 The race committee will attempt to broadcast sail numbers or bow numbers on VHF channel 69 of boats if:
 - (a) Any part of a boat's hull, crew or equipment is on the course side of the starting line during the two minutes before her starting signal and she is identified;

- (b) Any part of a boat's hull, crew or equipment is on the course side of the starting line at her starting signal.
- 13.7 Failure of a boat to hear the recall or warning broadcast, a boat's position in the sequence of broadcast numbers, or failure of the race committee to broadcast any or all numbers shall not be grounds for granting redress (this changes RRS 62.1(a))
- 13.8 When RRS 30.3 (Black Flag Rule) is in effect and a boat breaks RRS 30.3, the race committee intends to redisplay the black flag after the start to notify the fleet that one or more boats will be penalized (this changes RRS 30.3). The race committee also intends to announce the sail and/or bow numbers of the boats that have broken RRS 30.3 via VHF channel 69. Failure of a boat to see or hear her number or of the race committee to post her number or make a broadcast or to time it accurately shall not be grounds for redress. This changes RRS 62.1(a),

14. CHANGE OF THE NEXT LEG OF THE COURSE

- 14.1 A change of the next leg of the course will be signaled according to RRS 33.
- 14.2 To change the next leg of the course, the race committee will lay a new mark (or move the finishing line) and remove the original mark as soon as practicable. When in a subsequent change a new mark is replaced, it will be replaced by an original mark.
- 14.3 If Mark 1 is changed after the start of a race there will be no offset mark (Mark 1a).

15. THE FINISH

The finishing line will be between staffs displaying orange flags on the finishing boat(s) or the finishing boat and the nearby racing mark as described in SIs 11.5 and 11.6.

16. TIME LIMITS AND TARGET TIMES

- 16.1 If no boat has passed Mark 1 within 40 minutes of the start, the race will be abandoned.
- 16.2 If no boat has finished within 2 hours and 15 minutes of the start, the race will be abandoned.
- 16.3 Boats still racing (and that do not subsequently retire, get disqualified, or get redress) 45 minutes after the first boat sails the course and finishes, will be scored TLE (Time Limit Expired, see SI 19.3, Scoring) and should proceed to the starting area if another race is scheduled. The race committee boat at the finishing line will lower the orange flag with a long sound signal when the 30-minute period expires. This changes RRS 35.

17. PENALTY SYSTEM

- 17.1 The Scoring Penalty, RRS 44.3 as modified herein, will apply. RRS 44.2 One-Turn and Two Turns Penalties, is deleted.
- 17.2 The scoring penalty for infringements of RRS 31 shall be 10%. The scoring penalty for infringements of rules of Part 2 shall be 10% if the infringement occurred outside a Zone, and 20% if the infringement occurred inside a Zone. All scoring penalties shall be calculated as per RRS 44.3.
- 17.3 RRS 44.3(a) is changed such that code flag "I" is acceptable, and the flag used by a boat taking a scoring penalty shall have a hoist of not less than 150 mm and a fly of not less than 200 mm and shall be flown from a leg of the back stay adjuster above the deck.

- 17.4 The reporting requirements of RRS 44.3(b) may be satisfied by contacting the race committee on VHF channel 69. The race committee will post a list of boats that have accepted a scoring penalty on the official notice board.
- 17.5 In addition to the reporting requirements of RRS 44.3 (b), a boat accepting a scoring penalty shall file a "Scoring Penalty Acceptance Form" available at the Regatta Office at Villa Copa Mexico, within the Protest Time.
- 17.6 After-Race Scoring Penalty - A boat that may have broken a rule of Part 2 or RRS 31 while racing may take a penalty after racing and prior to the start of a protest hearing involving the incident. Her penalty shall be a Scoring Penalty of 20% if the acceptance is filed before the end of Protest Time, or 30% if the acceptance is filed after the end of Protest Time but before a hearing into the incident starts, calculated as described in RRS 44.3(c). However, if she caused injury or serious damage or gained a significant advantage in the race or series by her breach, her penalty shall be to retire. A boat accepting an After-Race Scoring Penalty shall file a "Scoring Penalty Acceptance Form" at the Regatta office within Protest Time. This adds to RRS 44.
- 17.7 A boat that complies with some but not all of the requirements of 44.3(a), 44.3(b) and SI 17.4 will receive an After-Race Scoring Penalty of 30% without a hearing. This changes RRS 63.1.
- 17.8 A boat failing to comply with SI 9.1, Check-in, shall receive a 10% scoring penalty in the next race without a hearing, calculated as per RRS 44.3(c). This changes RRS 63.1 and A5.
- 17.9 Penalties for breaking instructions 1.7, 1.8, 9, 21.4, 22, 24.5, 25, 26 and 27 may be less than disqualification if the Jury so decides.
- 17.10 RRS 64.1(a) is changed to allow the Jury to assign penalties in accordance with Appendix III: ALTERNATIVE PENALTIES FOR BREAKING SOME IJCA RULES.
- 17.11 Add to RRS 64.1(c): If a boat receives a penalty when not racing under SI 17.8 or 17.9 that penalty shall apply to the race designated by the Jury.
- 17.12 Appendix P is in effect except that P2. is modified such that P2.1 is the only penalty that shall apply. P2.1 is changed to: When a boat is penalized under P1, her penalty shall be a scoring penalty of 10% calculated as described in RRS 44.3(c). The penalized boat does not need to display a yellow flag.

18. PROTESTS AND REQUESTS FOR REDRESS

- 18.1 RRS 61.1(a) is changed such that the red flag shall have a hoist of at least 150 mm and a fly of at least 200 mm and shall be flown from a leg of the back stay adjuster above the deck.
- 18.2 Protest forms are available at the regatta office. Protests and requests for redress or reopening shall be delivered there within the protest time limit.
- 18.3 The protest time limit is 90 minutes after the last boat has finished the last race of the day. The same time limit applies to protests or requests for redress by the race committee and Jury about incidents they observe in the racing area. This changes RRS 61.3 and 62.2.
- 18.4 The race committee will post a list of penalties being assigned by the race committee prior to the end of protest time limit. The deadline for requesting redress based on these scores will be either 30 minutes after posting of the penalty notice, or the protest time limit, whichever is later.

- 18.5 Notices will be posted within 30 minutes after the protest time limit to inform competitors of hearings in which they are parties or named as witnesses. Hearings will be held in the protest room, beginning as soon as practical after a protest has been filed.
- 18.6 Notices of protests by the race committee or the Jury will be posted. Such posting within the protest time limit satisfies the requirement to inform boats as soon as reasonably possible under RRS 61.1(b).
- 18.7 A list of boats that, under instruction 17.12 have acknowledged breaking RRS 42 or have been penalized for breaking RRS 42 will be posted.
- 18.8 Breaches of instructions 1.5, 1.6, 21.4, and 25 will not be grounds for a protest by a boat. This changes RRS 60.1(a). Penalties for these breaches may be less than disqualification if the Jury so decides. The scoring abbreviation for a discretionary penalty imposed under this instruction will be DPI.
- 18.9 On the last scheduled day of racing the regatta a request for reopening a hearing shall be delivered
- (a) Within the protest time limit if the party requesting reopening was informed of the decision on the previous day;
 - (b) No later than 30 minutes after the requesting party was informed of the decision on that day.
- This changes RRS 66.
- 18.10 On the last scheduled day of racing a request for redress based on a Jury decision shall be delivered no later than 30 minutes after the decision was posted. This changes RRS 62.2.
- 18.11 Decisions of the Jury will be final as provided in RRS 70.5.

19. ARBITRATION

- 19.1 An arbitration meeting will be held prior to a protest hearing for each incident resulting in a protest involving a rule of Part 2 or RRS 31 (changes NOR 10.4), unless the arbitrator deems the incident inappropriate for arbitration. One representative of each party, who was on board at the time of the incident, will meet with the arbitrator. If all the parties to a protest are not represented, the arbitration meeting shall not be held. No additional witnesses will be permitted at the arbitration.
- 19.2 After hearing the testimony, the arbitrator will offer one of the following opinions:
- (a) The Jury would find the protest to be invalid. The arbitrator will allow the protestor to withdraw the protest.
 - (b) The Jury would find that no boat broke a rule. The arbitrator will allow the protestor to withdraw the protest.
 - (c) The Jury would find that one or more boats represented in the arbitration meeting broke a rule of Part 2 or RRS 31. The arbitrator would offer each of those boats the option to accept an After-Race Scoring Penalty, or to retire. The arbitrator will allow the protestor to withdraw the protest if he is satisfied with the outcome.
 - (d) A protest hearing is appropriate.
- 19.3 The Jury will schedule a protest hearing for any protests that are not withdrawn. Any boat that accepted an After-Race Scoring Penalty (see SI 17.5) will not be penalized further as a result of the protest hearing, unless the protest committee concludes that

the boat caused injury or serious damage, gained a significant advantage in the race or series, or broke a rule other than a rule of Part 2 or RRS 31.

- 19.4 If a protest is withdrawn, no protest hearing will be held; and the protest cannot be the subject of a request for redress or appeal.
- 19.5 Following an arbitration meeting, the arbitrator of that meeting may allow the protest to be withdrawn. This changes RRS 63.1.

20. SCORING

- 20.1 Four (4) races are required to be completed to constitute a series.
- 20.2 When fewer than five (5) races have been completed, a boat's series score will be the total of her race scores. When five(5) or more races have been completed, a boat's series score will be the total of her race scores less her worst race score.
- 20.3 Boats scored TLE will be scored points equal to the number of boats finishing within the time limit plus two points added by the race committee without a hearing. This changes RRS A4.2, A5, and A11.

21. REPLACEMENT OF CREW OR EQUIPMENT

- 21.1 Substitution of competitors that were not declared at registration will only be allowed with written approval of the Jury.
- 21.2 Unless the Jury specifies otherwise, any substitution permitted will be for 24 hours only.
- 21.3 The number of crew shall not change during the regatta.
- 21.4 Substitution of damaged or lost equipment will not be allowed unless authorized by the Jury. Requests for substitution shall be made to the Jury at the first reasonable opportunity. Substituted equipment shall comply with IJCA Class Rules.
- 21.5 Requests for substitution shall be submitted in writing at the Jury desk located at the Villa Copa Mexico and any reply shall be posted on the regatta notice board.

22. EQUIPMENT AND MEASUREMENT CHECKS

A boat or equipment may be inspected at any time for compliance with the class rules and sailing instructions. On the water a boat can be instructed by the race committee equipment inspector or measurer to proceed immediately to a designated area for inspection.

23. OFFICIAL BOATS

Official boats will be identified as follows:

- Race Committee boats: Race Committee Flag.
- Equipment Inspector boat: White flag with a black "M" inside.
- Judges boats: White flag with a black "J" inside.

24. SUPPORT BOATS

- 24.1 Support boats shall register with the Organizing Authority within the times designated for registration in SI 5.1 and clearly display the flag or other identification provided.
- 24.2 Support Boats shall comply with SI 1.5.

- 24.3 Support boats shall stay outside areas where boats are racing from the time of the warning signal for the first start until all boats have finished or the Race Committee signals a postponement or abandonment, unless instructed otherwise by the Race Committee.
- 24.4 Support boats shall carry a VHF radio tuned to the race committee channel 69.
- 24.5 Support boat drivers shall have valid third-party liability insurance 25,000 US Dollars or the equivalent and provide proof of coverage at registration.

25. TRASH DISPOSAL

Boats shall not put trash in the water. Trash shall be kept aboard and deposited in a trash receptacle on shore.

26. HAUL-OUT AND MOORING RESTRICTIONS

- 26.1 Boats shall be afloat by Sunday, March 4 at 18:00.
- 26.2 Boats shall not be hauled out during the regatta except with and according to the terms of prior written permission of the Jury.
- 26.3 Boats shall be moored at the Marina Riviera Nayarit harbor in the area designated for the J/24 fleet for the duration of the regatta.

27. DIVING EQUIPMENT, PLASTIC POOLS AND CAREENING RESTRICTIONS

- 27.1 Underwater breathing apparatus and plastic pools or their equivalent shall not be used around boats between the time and date specified in SI 26.1 and the end of the regatta.
- 27.2 Careening by any means for the purpose of cleaning or inspecting the hull is prohibited, unless permitted in writing by the jury.
- 27.3 The hull may be cleaned at any time by swimming or keelhauling using ropes or cloth.

28. RADIO COMMUNICATION

Except in an emergency, a boat shall neither make radio or other data transmissions while racing nor receive radio or data communication not available to all boats. This restriction also applies to mobile telephones.

29. PRIZES

Prizes will be awarded to at least the top 10 boats entered.

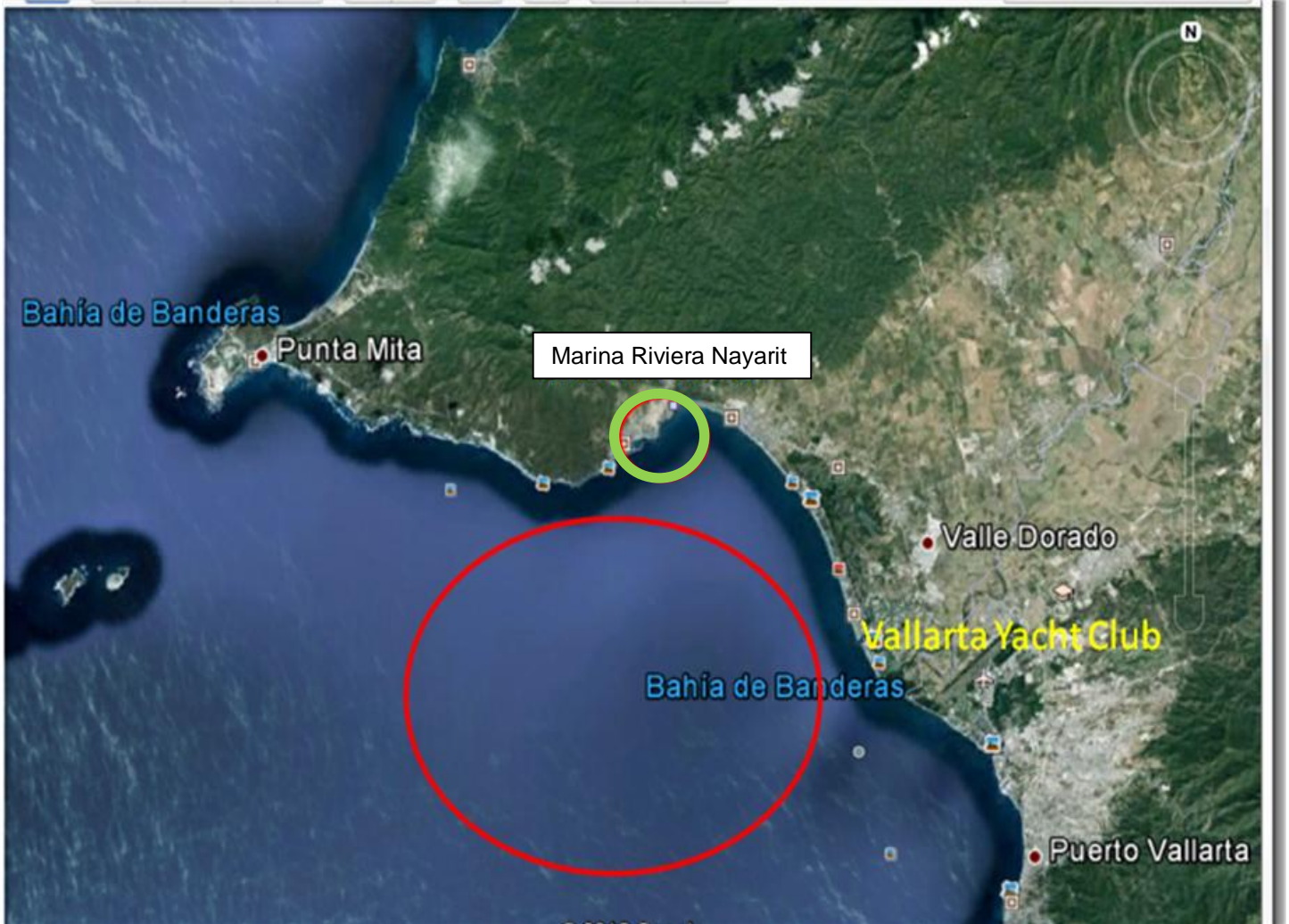
30. DISCLAIMER OF LIABILITY

Competitors participate in the regatta entirely at their own risk. See RRS 4, Decision to Race. The organizing authority will not accept any liability for material damage or personal injury or death sustained in conjunction with or prior to, during, or after the regatta. Skippers and crew will be required to sign a waiver of liability during registration.

31. INSURANCE

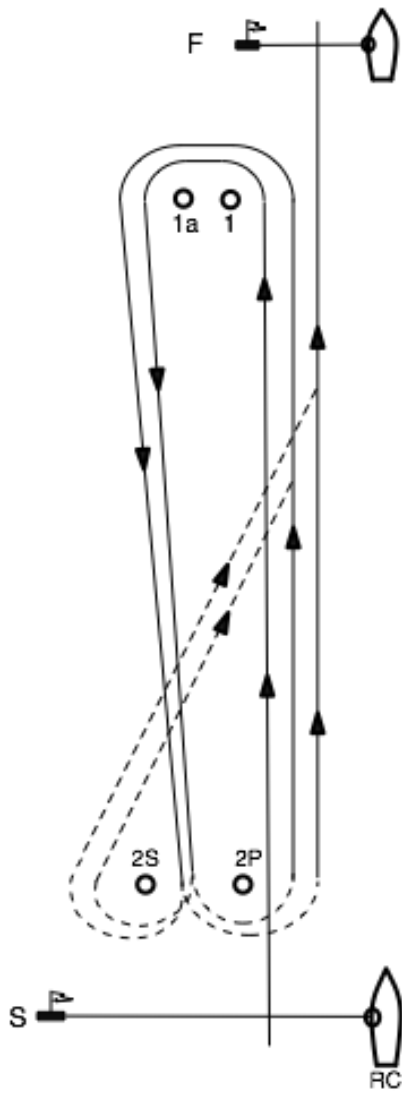
Each participating boat shall be insured with valid third-party marine liability insurance with a minimum cover of 25,000 US Dollars or the equivalent during the regatta.

ATTACHMENT I - RACING AREA LOCATION (circled in red)

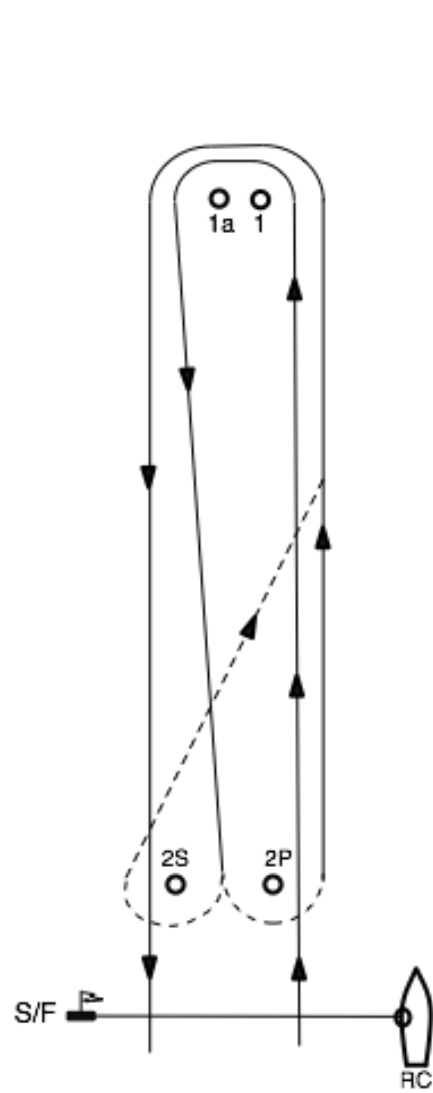


ATTACHMENT II – COURSE DIAGRAMS

COURSE 5
START - 1 - 1a - 2S/2P - 1 - 1a - 2S/2P - FINISH



COURSE 4
START - 1 - 1a - 2S/2P - 1 - 1a - FINISH



ATTACHMENT III - Alternative Penalties for Breaking Some Class Rules

Alternative scoring penalties shall apply for breaking certain class rules. All of these scoring penalties shall be calculated as described in RRS 44.3(c) and shall be applied to all races for which the boat was in non-compliance.

CLASS RULE	INFRINGEMENT	SCORING PENALTY
2.5.6	A copy of the Measurement Certificate and the Inventory of Required and Optional Equipment (Rule 3.7.3) are to be kept aboard the yacht one or both items are not on board.	20%
2.6.1	Advertising does not conform to the restrictions	20%
3.6.10 o)	The luff and/or foot of the mainsail set outside the distinguishing bands as defined in Rules 3.5.2(d) and 3.5.5(c).	20%
3.8.5	A bailing bucket of minimum capacity 9 liters fitted with a lanyard is not on board.	40%
3.8.9	2 liters or more of motor fuel is not on board when the boat crossed the finish line for the last race of the day	20%
4.1.3	The compass is installed but inoperable.	20%
4.1.8	The throwable lifesaving device and attached sea anchor not on deck and ready for use.	40%
4.1.10	The required first aid kit and manual are not on board	20%
4.3	Any of anchor(s), outboard motor, battery and fuel container are not secured against movement.	20%
7.1.19	Elastic (shock) cord is used to adjust the standing or running rigging.	20%
8.1.2	The stowage of required or optional equipment other than unbagged sails on the cabin sole over the keel.	20%
8.1.3	Use of other than normal sailing gear in normal, designed and proper storage areas to attain sailing weight.	20%
8.1.4	The connection to the mast heel of any adjustment device or equipment while racing.	20%
8.3	The removal of the rudder from the water when the Sailing Instructions stipulate that the boat shall remain afloat for the duration of the regatta	20%

If a boat receives one of the above penalties, the protest decision shall include whether the same penalty can or will be applied to subsequent infringements. The protest decision may also specify that the boat cannot be protested again under the same class rule for a time period specified by the Jury.

Amended to include Class Rule Changes Effective April 7, 2011